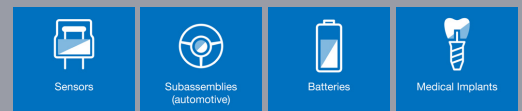




XCT-1000 High Resolution setup

High resolution AXI system with CT technology



The **XCT-1000 platform** features both volume analyzing and automatic processing of the slices. The XCT-1000 system is capable of processing the Siemens CERA-TXR technique with exact volume reconstruction by using the latest CMP-technology for automatic geometrical correction and calibration. It is especially suitable for the inspection of small to medium production volumes or for the use in laboratory environments, production sampling or failure analysis. The XCT-1000 HR applications range from Semi-Backend component level inspection for wire bonds, μ -bumps and die-attach voiding to super high resolution solder-joint inspection for PCB's, sensors and LED's.

SYSTEM CONCEPT

- Horizontal X-ray beam and vertical rotation axis to avoid gravitation influences
- Adjustable detector mounting for various types of flat panel detectors
- Configurable X-ray tube mounting

The **XCT-1000 platform** is available in the following configurations:

XCT-1000 Transmission (2D) + CT-Analyzer + CT-AXI

Features and Benefits

- Flexible AXI CT system for offline setups
- Microfocus X-ray tube: sealed tube / maintenance free
- Digital flat panel detector
- Adjustable sample rotation table with up to 5 axes motion system
- Transmission mode for high-speed manual and automated analyzing
- Real-time CT volume reconstruction
- CERA (Siemens) core reconstruction with high speed CT functionality
- CMP (Siemens) CT calibration software with automated correction/compensation of geometrical motion parameters
- AXI algorithm library for transmission and volume (slice) analyzing (wire-bond, μ bumps, die-attach-voiding,..)
- Optional: Customized sample holder



Inspection & Process Software

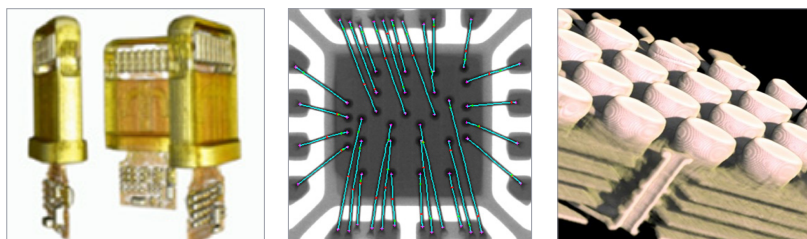
- PC-Station with multi-core processor setup
- Windows 10 platform

MIPS Inspection Platform

- MIPS_NDT control software and GUI for manual and automatic X-ray analyzing and automatic classification
- MIPS_CT volume reconstruction and volume (slice) analyzing including CERA and CMP software tools
- MyVGI Software License / Viewer for CT volume visualization

Applications

The XCT-1000 system is ideal for non-destructive testing, materials investigations and in particular for dimensional measurements for internal structures, undercuts and free form surfaces.



Specifications

Facilities	
Dimensions:	1735 mm (H) x 1620 mm (W) x 820 mm (D)
Weight:	1.500 kg
Safe Operating Temperature:	15° - 28 °C optimal 20° - 25° C
Power Consumption:	max. 6 kW
Line Voltage:	220 VAC, single phase, 16 A
Air:	5-7 Bar, < 2 l/min, filtered (30µ), dry, oil free

X-ray Image Chain	
<u>X-ray Source (sealed tube)</u>	
Energy:	High Resolution Setup 160 kV/20 W
Focal Spot:	<= 1µm spot
Object resolution (Voxel size):	down to 1-3 µm
Grey resolution:	14 Bit
<u>Detector Type:</u>	
Flatpanel Detector	50/75 µm pixel size

Inspection features	
Max. sample size:	90 mm x 120 mm
Max. inspection area:	90 mm x 120 mm
FDD (focus detector distance)	130 - 700 mm
FOD (focus object distance)	50 - 650 mm
Max. sample weight:	5 kg

Motion System	
CT multi axes motion system with rotating sample	
Programmable motion system:	x1, x2, y, z, rotation

Options	
Barcodereader	
Volume Graphics software licence	
Custom fixtures	

For more information, speak with your Nordson MATRIX representative.

Germany/ Western Europe

Feldkirchen (Munich)
+49.89.2000.338.200 **Phone**
info@nordsonmatrix.com **Email**

Germany/ NDT systems

+49.5121.875.8428 **Phone**
info@nordsonmatrix.com **Email**

Hungary/ Eastern Europe

+36.30.876.5038 **Phone**
hungary@nordsonmatrix.com **Email**

USA

+1.760.930.3301 **Phone**
serviceusa@nordsonmatrix.com **Email**

Brazil

+55.19.99980.0505 **Phone**
brazil@nordsonmatrix.com **Email**

South East Asia

+65.6552.7533 **Phone**
sea@nordsonmatrix.com **Email**

China

+86.512.6665.2008 **Phone**
china@nordsonmatrix.com **Email**

Japan

+81.3.3599.5920 **Phone**
info@nordsonmatrix.com **Email**

Korea

+82.31.736.8321 **Phone**
info@nordsonmatrix.com **Email**

Taiwan

+886.963.004.675 **Phone**
cs.taiwan@nordson.com **Email**

India

+91 44 4353902 **Phone**
sea@nordsonmatrix.com **Email**